

BEST PRACTICES FOR USING RAYPLICKER HANDY



- ✓ GREY EDGES PARALLEL TO SCREEN EDGES
- ✓ MOUTH OPENED AND BREATHING THROUGH THE NOSE
- ✓ SALIVA LIMITATION
- ✓ CENTERING THE TOOTH, WITHOUT ANGLE NOR INCLINATION
- ✓ TIP UNDER THE LIP
- ✓ TIP IN CONTACT WITH ADJACENT TEETH
- ✓ TIP IN CONTACT WITH THE GINGIVA
- ✓ DON'T MOVE DURING THE ACQUISITION (1s)

INCORRECT PRACTICES

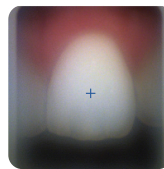
TIP INCORRECTLY
POSITIONED



MOUTH CLOSED



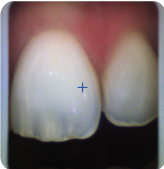
CONDENSATION



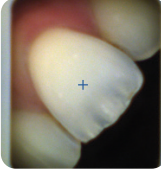
EXCESSIVE PRESSURE
ON THE GINGIVA



TOOTH CENTERED
INCORRECTLY



WRONG ANGLE



WRONG INCLINATION



VISIBLE LIP



CALIBRATION TIPS

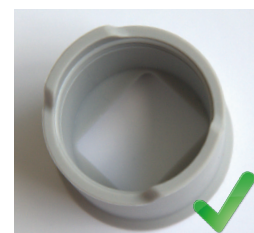
FAILURE TO RESPECT THE DISINFECTION AND STERILIZATION PROCEDURES CAUSES A HASTY DEGRADATION OF THE TIPS.

A DAMAGED CALIBRATION TIP (DISCOLORATION, MODIFIED ASPECT,...) MUST BE CHANGED.

LIFETIME VERIFIED FOR 100 AUTOCLAVE CYCLE PASSES.



DAMAGED TIP



NEW TIP

