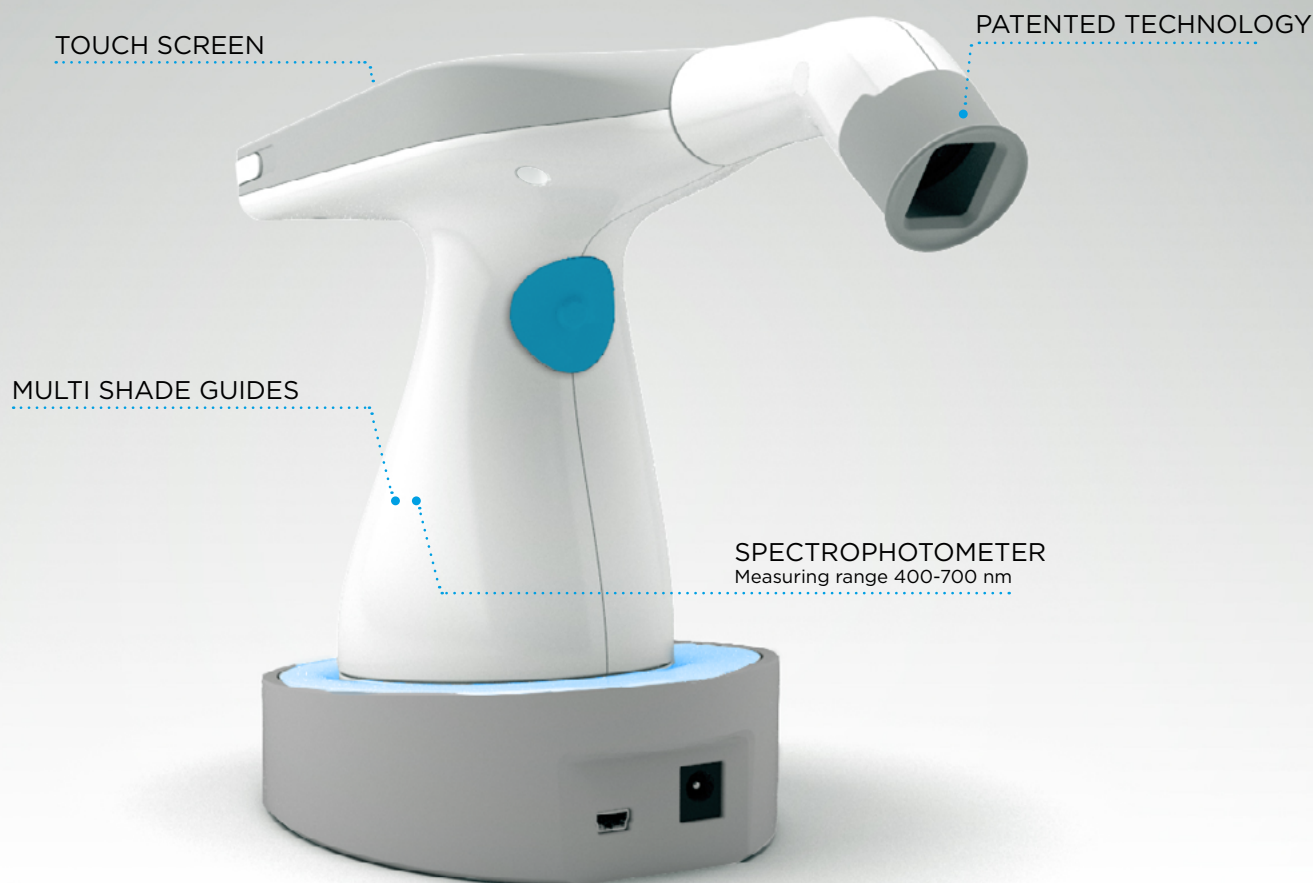


RAYPLICKER  
HANDY



SAY "YES"  
TO DIGITAL  
DENTISTRY



## DISCOVER RAYPLICKER HANDY

The Rayplicker Handy is a digital shade scanner that allows you to easily, reliably and reproducibly perform a high quality dental color analysis that determines luminosity, saturation, chromaticity and translucency of the tooth. This device is intended for dental surgeons as well as dental laboratories.

With its Rayplicker software, this solution is a real innovation for transmission protocol of aesthetic parameters of a tooth. Indeed, it allows transparent and permanent interaction between dentists and laboratories via the Rayplicker Service Pack (data exchange for real-time order control).

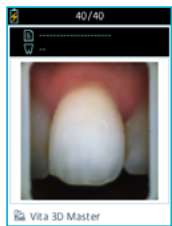
With Rayplicker Handy say «Yes» to digital dentistry !

**RAYPLICKER**  
HANDY

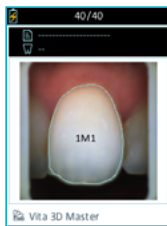
## Reliability, speed and accuracy in a single acquisition.

**Reliability :** Record all the aesthetic parameters of the tooth and communicate them without degradation and without interpretation to the laboratories.

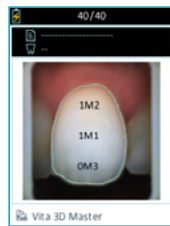
**Efficiency :** Improve traceability and standardize dental prosthesis manufacturing process.



Polarized picture



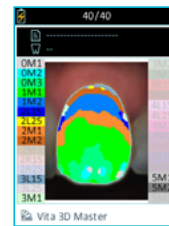
Overall shade



3 parts mapping



9 parts mapping



Detailed mapping



Translucency

## Why Rayplicker ?



### Time saving and profitability

A complete color analysis in a few seconds. High Return On Investment.



### Digital files

To ensure better traceability and sharing without loss of information.



### Accuracy

Ultra accurate pixel analysis.



### User-friendliness

Touch screen, miniaturized measuring head.



### Reliability

Patented technology offering objectivity and repeatability.



### Plug & Play

Self calibration of the device. A unit designed for the ease of use.



### Hygiene

Protective sheaths, sterilizable calibration tips.



### Flexibility

Configure the shade guide of your choice. Up to 4 user profiles

## Daily comfort

**Simple :** Ergonomic and interfaces have been designed to provide you the simplest shade-taking experience.

**Plug and Play :** Calibration is automatic and performed while you are taking a shade.

**Fast :** The acquisition is done very quickly. Eliminate the risk of errors related to the movements of the patient and the practitioner.

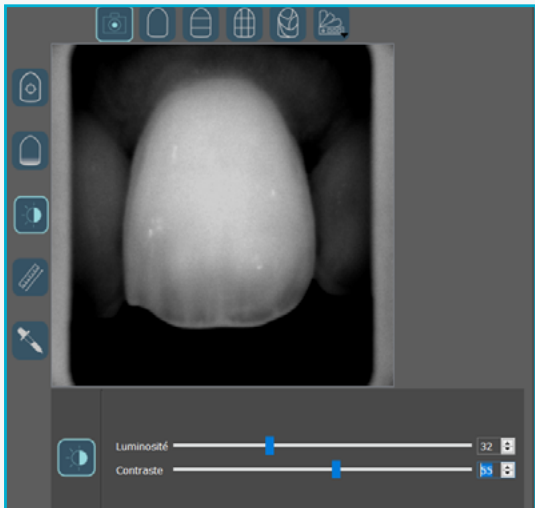
**Patient pictures :** Simply attach patient pictures to your digital file with “Rayplicker Pics App Solution”.



## Features for the complete analysis of a natural tooth.

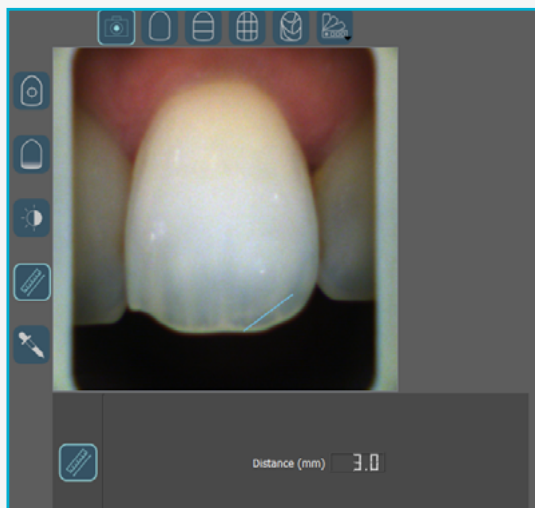
### Black and white :

- The black and white setting allows you to convert the color polarized picture to a grayscale picture.
- Use the sliders to change the luminosity and contrast settings to highlight the distribution of dentin, enamel or other noticeable characteristics.



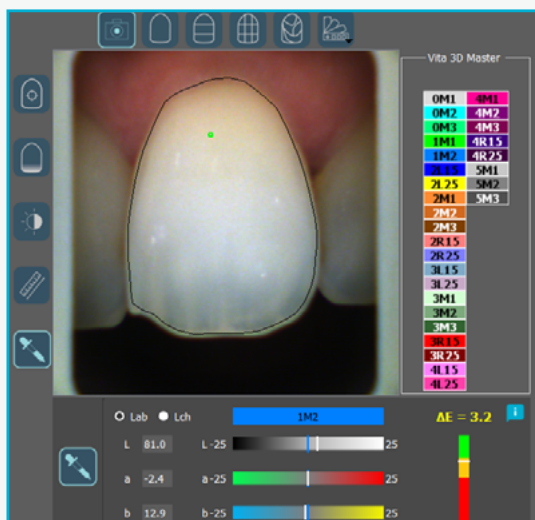
### Measuring tool :

- Easily localize translucent areas or other noticeable characteristics.



### Colorimetric analysis according to the CIE L\*a\*b\* or L\*C\*h coordinates :

- Easily calculate on each pixel, the color differences «Delta E or  $\Delta E$ » between the real shade of the tooth and the closest shade according to the referent shade guide.
- A simplified interface for fast reading of data.
- Quickly visualize the differences according to the 3 dimensions of the color: luminosity, chromaticity and hue.
- Easily calculate pixel-by-pixel colorimetric coordinates.



# RAYPLICKER SOFTWARE FOR EASY ANALYSIS, IMPROVED COMMUNICATIONS AND BETTER TRACEABILITY.



## Perform accurate and scientific color analyses:

- Multi shade guide analysis
- Image processing tool (Luminosity/contrast)
- CIE L\*a\*b\* / L\*C\*h analysis
- Measurement tool



## Possibility of creating your production files directly from the software:

- Fixed prosthesis
- Removable prosthesis
- Implantology



## Digital workflow

**Relational :** The immediate transfer of the requests in digital to the laboratories improves your customer service and your dentist-laboratory relationship.

**Community :** The Cloud platform, dedicated to the interaction between your practice and the laboratories, is a community platform.

**Connected software :** The integration of orders via the Cloud allows a continuous monitoring of the manufacturing process of the prosthesis and the transmission of traceable and recordable files.

## An essential tool for laboratories

**Interaction :** Raypicker is a real innovation in the transmission protocol of aesthetic parameters of a tooth. Indeed, it allows a transparent and permanent interaction between dentist and dental laboratories.

**Complete analysis :** The laboratory receives a complete color analysis including luminosity, saturation, chromaticity and translucency of a tooth. Added to this, the possibility of integrating patient pictures.



#### Technical specifications :

**Cartography :** 2D mapping

**CMOS sensor :** 400 x 400 px

**Spectrophotometer :** measuring range 400-700 nm

**Dimension of the measuring head in mm :** L. 76 /  
Ø : 25 mm

**Screen :** Touch screen

**Resolution :** 320 x 240 NTSC

**Battery :** Li-Po 3,7 2200 mAh

**Memory capacity :** 40 files

**Weight of the handpiece :** 390 g

**Dimensions of the handpiece in mm :** L. 210 x L. 75  
x H. 155

**Weight of the dock :** 340 g.

**Dimensions of the dock in mm :** L. 133 x L. 101 x H. 43

**Output :** USB 2.0.

**Main plug :** 5V 1Ah

#### Compatibility :



#### Rayplicker Pics App Solution :

Free download



#### Pack contents:

Rayplicker shade-matching device

Docking station

Calibration tips x6

Protective sheaths x50

Cables and connectors - Adapters

Quick start guide

Software license included

#### Rayplicker Handy is a medical device class I.

It bears the CE marking in accordance with the European Medical Device Regulation (EU) 2017/745. Date of first CE marking: 2017. Made in France by BOREA. For professional use only.